



IBROX STADIUM

Essential Venue Guide

Ibrox Stadium will offer spectators superb sightlines and an intimate atmosphere for an exciting Rugby Sevens competition.

At Ibrox Stadium

For everyone's safety and enjoyment of the event, all spectators will pass through an airport style screening process for prohibited and restricted items before being allowed into venues.

Facilities	Advice	Regulations	Important information
<ul style="list-style-type: none">- Spectator Information Point, including induction hearing loop, pushchair & wheelchair storage and Lost & Found service for people and property.- Wheelchair loan, wheelchair pushing, and accessible buggy service.- Accessible toilets and Changing Places toilet.- Assistance dog spending & water area.- First Aid.- Merchandise, food & drink kiosks and free water filling stations in the external Spectator Plaza.- Ticket office.- Cash only payments will be accepted by food & drink kiosks and programme sellers (NB no ATM/cashback facility available). Merchandise kiosks accept cash, VISA and MasterCard. ATMs are located on Copland Road, near Ibrox Subway Station, and ASDA Superstore on Helen Street, 10 minutes' walk from venue.	<ul style="list-style-type: none">- Plan your journey now. Make sure you know how to reach the venue and allow plenty of time for travel, queuing systems at transport hubs, and security checks.- Do not drive to the venue. Except limited pre-bookable facilities for Blue Badge holders, there will be no parking or set-down/pick-up points for private cars at or near the venue.- Entry gates will open 2 hours before each session starts. Arrive in plenty of time to allow for security and ticket checks.- Entry gates and screening areas are located near the north-west, north-east and south-east corners of the stadium.- Edmiston Drive between Broomloan and Copland Road will be closed, as it will form part of the venue.- It is not possible to leave Ibrox Stadium then re-enter – make sure you bring everything you need (e.g. medication, nappies etc).- Public transport is expected to be particularly busy after each session so walking or cycling may be your easiest way of returning to the city centre.	<ul style="list-style-type: none">- Please do not bring a bag with you to the venue.- Spectators with a wheelchair ticket can bring a wheelchair into the seating area. All other ticketholders with wheelchairs, prams or pushchairs must store them at the Information Point. Just ask a member of staff for assistance.- Children under the age of two years on 23 July 2014 will not require a ticket or be allocated a seat. Children under the age of 16 must be accompanied by an adult and may not enter the venue alone. Under 16s may not enter the Party Stand!- Smoking, including electronic cigarettes, is not permitted within any Games venue. This includes any open air space within the venue perimeter. Smoking is discouraged immediately outside venues.- Any spectator entering the pitch will be arrested.	<ul style="list-style-type: none">- Alcohol can be purchased from the food & drink kiosk, but may not be brought into the venue from outside.- All containers of liquids, aerosols or gels – except sunscreen (200ml) and non-alcoholic drinks (500ml) – must be 100ml or under in volume.- You can bring a plastic water bottle of 500ml or under.- The following items will not be permitted at Ibrox Stadium: cans; glass; flags of non-participating causes, affiliations or organisations; all photographic equipment over 30cm in length, including tripods and monopods; golf style umbrellas, bags, coolbags and picnic hampers.- The following items are prohibited and illegal under Scottish law: knives; firearms; ammunition; explosives, pyrotechnics and flares; toxic or irritant chemicals; CS spray; illegal drugs and similar substances.- For full details and guidelines, visit: glasgow2014.com/tickets

Travelling to and from Ibrox Stadium

Approximately 2.7 miles (54 minutes' walk) from George Square (Glasgow city centre)

Glasgow 2014 is a public transport Games. Where possible, cycle or walk. Plan your Games Time journeys using the Traveline Scotland Journey Planning App: travelinescotland.com

On the day for which it is valid, your event ticket includes access to local public transport services (trains, buses and Subway). To access these services, simply show your event ticket on request. Further details are available at glasgow2014.com/transport/public-transport

For the latest transport news, visit glasgow2014.com/transport or follow us on twitter [@GamesTravel2014](https://twitter.com/GamesTravel2014)

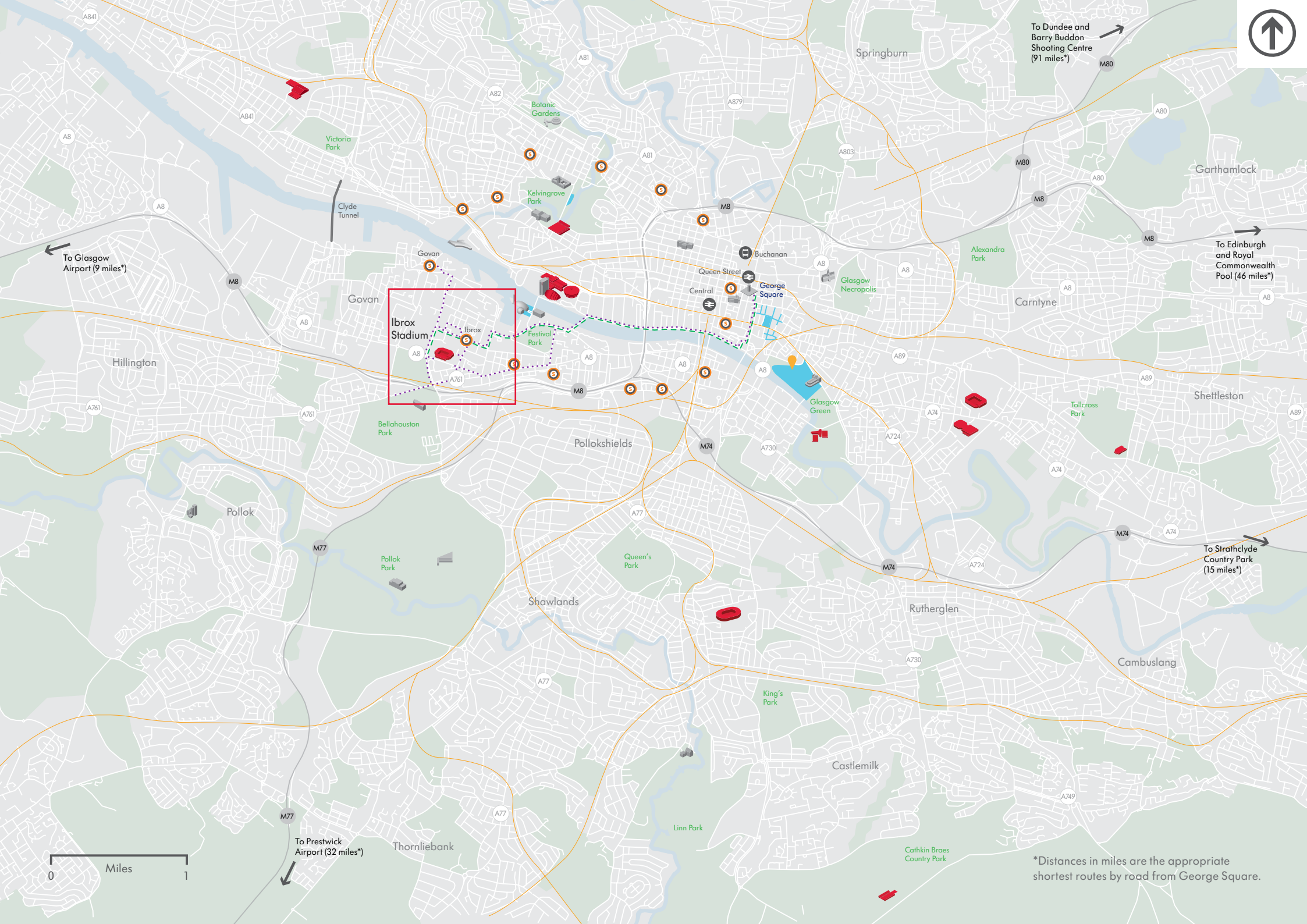
- Limited parking for wheelchair users is located off Broomloan Road, 2 minutes' walk from venue. It's free and must be pre-booked on a first-come, first-served basis at glasgow2014.com/accessibility
- Accessible shuttle bus services for those with restricted mobility are detailed on the following page, and must also be pre-booked at glasgow2014.com/accessibility
- Accessible taxis can drop off and pick up wheelchair/easy access ticket holders on Fairley Street, 3 minutes' walk from venue.
- For all accessibility enquiries go to glasgow2014.com/accessibility

See next page for recommended transport options.

Travelling to and from Ibrox Stadium

Approximately 2.7 miles (54 minutes' walk) from George Square (Glasgow city centre)

	Walking and Cycling	Local Public Bus	Dedicated Shuttle Bus	Accessible Shuttle Bus	Subway	Park & Ride
Depart City Centre	George Square, 2.7 miles from venue.	Union Street at Central Station. Renfield Street. (First 9, 9A, 10/ McGill's 23, 23A, 26 and 38).	Buchanan Bus Station.	Partick Train Station (accessible).	Your nearest Subway station.	Go to glasgow2014.com/transport/parkandride for latest information.
Arrive	Ibrox Stadium. Cycle parking at corner of Broomloan Road and Edmiston Drive, 2 minutes' walk to venue.	Paisley Road West at Merrick Gardens (First 9, 9A, 10/ McGills 38), 5 minutes' walk to venue. Govan Road (McGills 23, 23A and 26), 10 minutes' walk to venue.	Spectator transport mall at Brighton Street, 7 minutes' walk to venue.	Edmiston Drive, 3 minutes' walk to venue.	Ibrox, 2 minutes' walk to venue.	
Return	Ibrox Stadium.	Paisley Road West at Merrick Gardens, (First 9, 9A, 10/ McGill's 38), 5 minutes' walk from venue. Govan Road (McGills 23, 23A and 26), 10 minutes' walk from venue.	Spectator transport mall at Brighton Street, 7 minutes' walk from venue.	Edmiston Drive, 3 minutes' walk from venue.	Ibrox, 2 minutes' walk from venue.	
Note	Walking takes 54 minutes from George Square. Cycling (18 minutes to cycle parking) may be your quickest way of travelling to Ibrox Stadium. Routes pass close to BBC@theQuay. Bags and panniers may not be left unattended in the cycle parking area.	Many normal services will be running, but may be adjusted for Games Time. Local services will be severely restricted by the Marathon on 27 July. For further information go to travelinescotland.com		Accessible Shuttle places are available to wheelchair/easy access ticket holders on a first-come, first-served basis, and must be pre-booked at glasgow2014.com/accessibility	Glasgow Subway is not considered accessible to all due to the number of steps in its stations. For more Subway information, go to spt.co.uk/subway	Park & Ride places are limited and must be pre-booked on a first-come, first-served basis at glasgow2014.com/transport/parkandride



Ibrox Stadium

To Glasgow Airport (9 miles*)

To Dundee and Barry Buddon Shooting Centre (91 miles*)

To Edinburgh and Royal Commonwealth Pool (46 miles*)

To Strathclyde Country Park (15 miles*)

To Prestwick Airport (32 miles*)

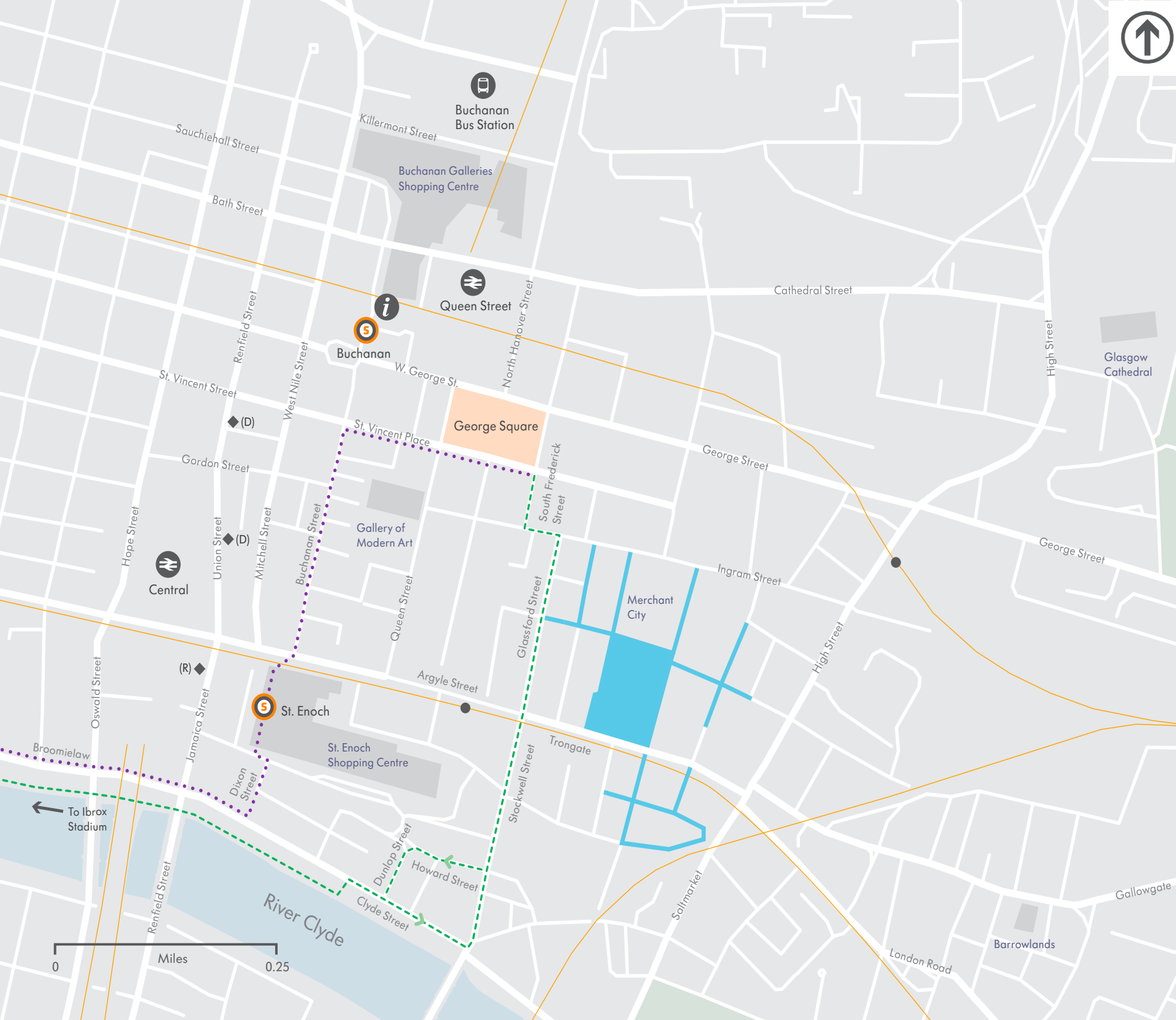
Miles
0 1

*Distances in miles are the appropriate shortest routes by road from George Square.



Your journey from central Glasgow

- Rail route
- Walking route
- Cycling route
- Landmark
- Festival hub
- Train station
- Public bus stop (depart)
- Public bus stop (return)
- Shuttle bus
- Subway station
- Tourist information



0 Miles 0.25

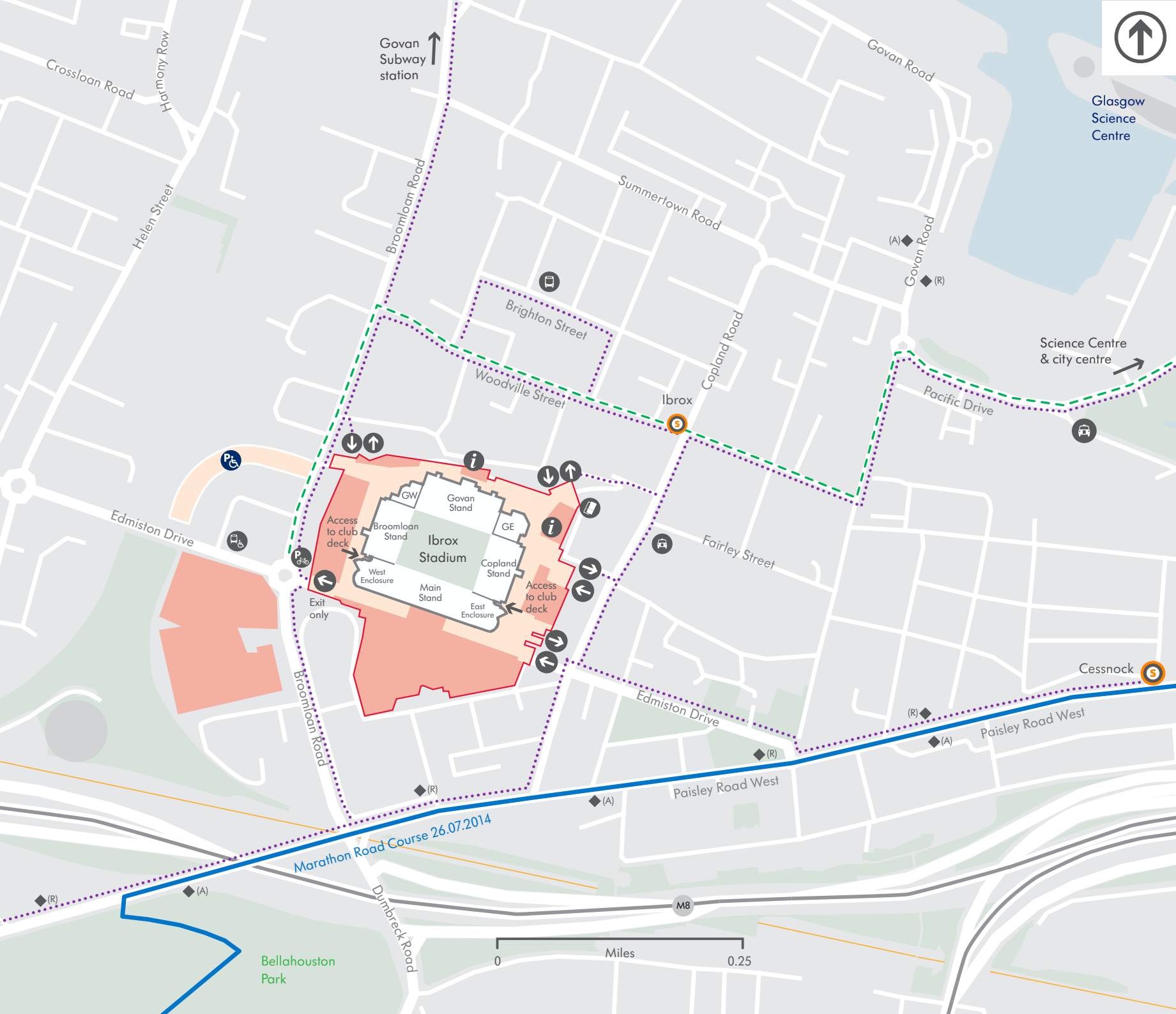
© Crown Copyright and database right 2014. All rights reserved.
 OS Licence No. 100023379. You are not permitted to copy, sub-license, distribute or sell any of this data to third parties in any form. Maps are indicative only and are subject to change.



Arriving at Ibrox Stadium

Key

- Rail route
- Walking route
- Cycling route
- Security perimeter
- Spectator area
- No spectator access
- Public bus stop (arrive)
- Public bus stop (return)
- Shuttle bus
- Pre-booked accessible shuttle bus
- Pre-booked accessible parking
- Cycle parking
- Taxi drop-off
- Entrance/exit
- Information
- Subway station
- Ticket office



© Crown Copyright and database right 2014. All rights reserved.
 OS Licence No. 100023379. You are not permitted to copy, sub-license, distribute or sell any of this data to third parties in any form. Maps are indicative only and are subject to change.

Sport at Ibrox Stadium



Can you tell the difference between a hitch-kick and a Maori sidestep?
Find out more about Rugby Sevens at:

glasgow2014.com/sports

Want to see more world-class Rugby?
The IRB Sevens are coming to Scotstoun Stadium in May 2015!
For more information go to:

scottishrugby.org

If you're inspired to have a go, there are hundreds of ways to unleash your sporty side after the Games. You can play, coach or volunteer – and a comprehensive list of opportunities across Scotland can be discovered here:

sportscotland.org.uk/unleash

For physical activity opportunities in Glasgow, call Glasgow Sport on **0800 027 0470**.

Alternative formats of this document are available on request.
Email contactus@glasgow2014.com or call 030 3333 2014.

If you wish to use a text relay service, see www.textrelay.org for assistance.

Near Ibrox Stadium

- **House for an Art Lover**
This Art Nouveau house was designed for a theoretical competition set by a German design magazine. The challenge was taken up by Charles Rennie Mackintosh, and his vision was made reality 95 years later in Bellahouston Park. Here you can delve into the mind of one of Scotland's architectural heroes.
- **Pollok House and Pollok Country Park**
The elegant Pollok House hints at a bygone era. Upstairs, the luxuriously-furnished rooms house a world-famous art collection. Down the sweeping staircase, you can picture life from the servants' perspective before stopping for refreshment in the café. Take a stroll in the surrounding parkland and look out for the Highland cows!
- **The Burrell Collection**
Situated in the beautiful surroundings of Pollok Country Park, the breathtaking Burrell Collection comprises over 8,000 objects, spanning jewellery and sculpture from ancient civilisations, Impressionist painting, Chinese, Islamic and mediaeval European art, fine textiles, tapestries and armour.
- **Blue Block Studio and Yellow Valley ('Generation' at Tramway), Thursday 23 July–Saturday 2 August 2014 (except 28 July)**
Blue Block Studio is an exciting, innovative programme of creative play and storytelling for babies under 24 months together with their grown-ups. Yellow Valley is a loveable, contemporary, musical-storytelling performance for children aged 2 to 4 years.
- **'Cargo, Camera, Action!' (Glasgow Film), Custom House Quay, 26 July 2014**
Spend the day at an outdoor cinematic spectacular which will take over part of the River Clyde for a celebration of Glasgow and film. Highlights include theatrical concerts and a mocked-up film set from arts collective 85A.
- **Commonwealth Flotilla, Saturday 26 July 2014**
This flotilla will be the largest in the River Clyde's history, with more than one thousand people participating on 250 boats of all shapes and sizes. Each vessel has the same mission – to celebrate the Games and the Commonwealth.

To protect our environment, please don't print this document unless absolutely necessary.