



SCOTSTOUN SPORTS CAMPUS

Essential Venue Guide

Scotstoun Sports Campus' brand new courts – six for Squash, with a glass-walled show court; eight plus two show courts for Table Tennis – will give audiences a fantastic view of the action.

At Scotstoun Sports Campus

For everyone's safety and enjoyment of the event, all spectators will pass through an airport style screening process for prohibited and restricted items before being allowed into venues.

Facilities	Advice	Regulations	Important information
<ul style="list-style-type: none">- Spectator Information Point, including induction hearing loop, wheelchair loan, wheelchair pushing service, pushchair & wheelchair storage, and Lost & Found service for people and property.- Accessible toilets and Changing Places toilet.- Assistance dog spending & water area (water bowls available from Information Point).- First Aid.- Merchandise, food & drink kiosks and free water filling stations.- Ticket office.- There will be no cloakroom facility. However, come prepared for sunshine or showers at the external Spectator Plaza.- Cash only payments will be accepted by food & drink kiosks (NB no ATM/cashback facility available). Merchandise kiosks accept cash, VISA and MasterCard.	<ul style="list-style-type: none">- Plan your journey now. Make sure you know how to reach the venue and allow plenty of time for travel, queuing systems at transport hubs, and security checks.- Use public transport – do not drive to the venue. Except limited pre-bookable facilities for Blue Badge holders, there will be no parking or set-down/pick-up points for private cars at or near the venue.- Entry gates will open 90 minutes before each session starts. Arrive in plenty of time to allow for security and ticket checks.- It is not possible to leave Scotstoun Sports Campus then re-enter – make sure you bring everything you need (e.g. medication, nappies etc).	<ul style="list-style-type: none">- Bringing a bag may slow down your entry. Each spectator is permitted one small bag no larger than 25 litres (equivalent to 30 x 20 x 20 cm/12" x 8" x 8"). It must be soft sided and fit under your seat.- Spectators with a wheelchair ticket can bring a wheelchair into the seating area. All other ticketholders with wheelchairs, prams or pushchairs must store them at the Information Point. Just ask a member of staff for assistance.- Children under the age of two years on 23 July 2014 will not require a ticket or be allocated a seat. Children under the age of 16 must be accompanied by an adult and may not enter the venue alone.- Smoking, including electronic cigarettes, is not permitted within any Games venue. This includes any open air space within the venue perimeter. Smoking is discouraged immediately outside venues.	<ul style="list-style-type: none">- Alcohol can be purchased from the food & drink kiosks, but may not be brought into the venue from outside.- All containers of liquids, aerosols or gels – except sunscreen (200ml) and non-alcoholic drinks (500ml) – must be 100ml or under in volume.- You can bring a plastic water bottle of 500ml or under.- The following items will not be permitted at Scotstoun Sports Campus: cans; glass; horns, vuvuzelas or similar items; flags of non-participating causes, affiliations or organisations; all photographic equipment over 30cm in length, including tripods and monopods; golf style umbrellas, large bags, coolbags and picnic hampers.- The following items are prohibited and illegal under Scottish law: knives; firearms; ammunition; explosives; toxic or irritant chemicals; CS spray; illegal drugs and similar substances.- For full details and guidelines, visit: glasgow2014.com/tickets

Travelling to Scotstoun Sports Campus

Approximately 4 miles from George Square (Glasgow city centre)

Glasgow 2014 is a public transport Games. Where possible, cycle or walk. Plan your Games Time journeys using the Traveline Scotland Journey Planning App: travelinescotland.com

On the day for which it is valid, your event ticket includes access to local public transport services (trains, buses and Subway). To access these services, simply show your event ticket on request. Further details are available at glasgow2014.com/transport/public-transport

For the latest transport news, visit glasgow2014.com/transport or follow us on twitter [@GamesTravel2014](https://twitter.com/GamesTravel2014)

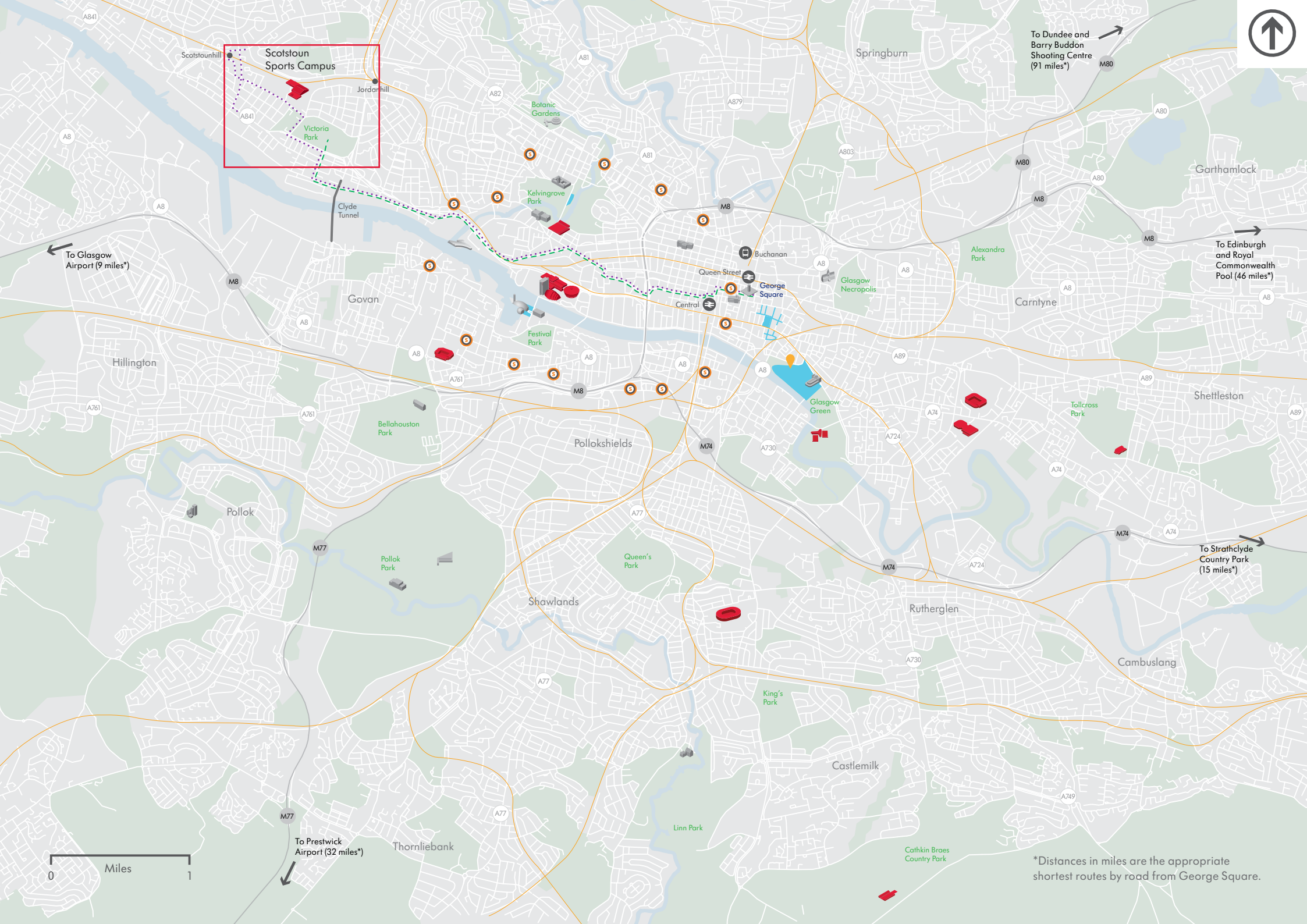
- Limited parking for Blue Badge holders and wheelchair users is available near the venue and includes Accessible Shuttle bus transport to the venue entry. It's free and must be pre-booked on a first-come, first-served basis at glasgow2014.com/accessibility
- An Accessible Shuttle bus service for those with restricted mobility will be available from Scotstounhill Station. For latest information, including how to book, go to glasgow2014.com/accessibility
- For all accessibility enquiries go to glasgow2014.com/accessibility
- No Park & Ride service is available for this venue.

See next page for recommended transport options.

Travelling to Scotstoun Sports Campus

Approximately 4 miles from George Square (Glasgow city centre)

	Cycling	Rail	Local Public Bus	Accessible Shuttle Bus
Depart City Centre	George Square, 4 miles from venue.	Glasgow Central Station Low Level. Glasgow Queen Street Station.	Argyle Street at Radisson Hotel (1, 1A/B/C/E, 2, 3 and 4).	Scotstounhill Station (accessible). Accessible parking area.
Arrive	Scotstoun Sports Campus. Cycle parking available next to Victoria Park basketball courts, 4 minutes' walk from venue entry/exit.	Scotstounhill Station, 15 minutes' walk to venue.	Dumbarton Road before Balmoral Street (1, 1A/B/C/E, 2 and 3). Westland Drive before Danes Drive (4).	Danes Drive, 1 minute's walk to venue entry.
Return	Scotstoun Sports Campus.	Scotstounhill Station, 15 minutes' walk from venue.	Dumbarton Road after Verona Street (1, 1A/B/C/E, 2 and 3). Westland Drive after Danes Drive (4).	Danes Drive, 1 minute's walk from venue exit.
Note	Cycling to Scotstoun Sports Campus takes approximately 26 minutes. Bags and panniers may not be left unattended in the cycle parking area.	Glasgow Central, Queen Street and Scotstounhill stations are accessible.	Many normal services will be running, but may be adjusted for Games Time. For further information go to travelinescotland.com	Accessible Shuttle places are available to wheelchair users/easy access ticket holders on a first-come, first-served basis, and must be pre-booked at glasgow2014.com/accessibility



Scotstoun Sports Campus

To Dundee and Barry Buddon Shooting Centre (91 miles*)

To Glasgow Airport (9 miles*)

To Edinburgh and Royal Commonwealth Pool (46 miles*)

To Strathclyde Country Park (15 miles*)

To Prestwick Airport (32 miles*)

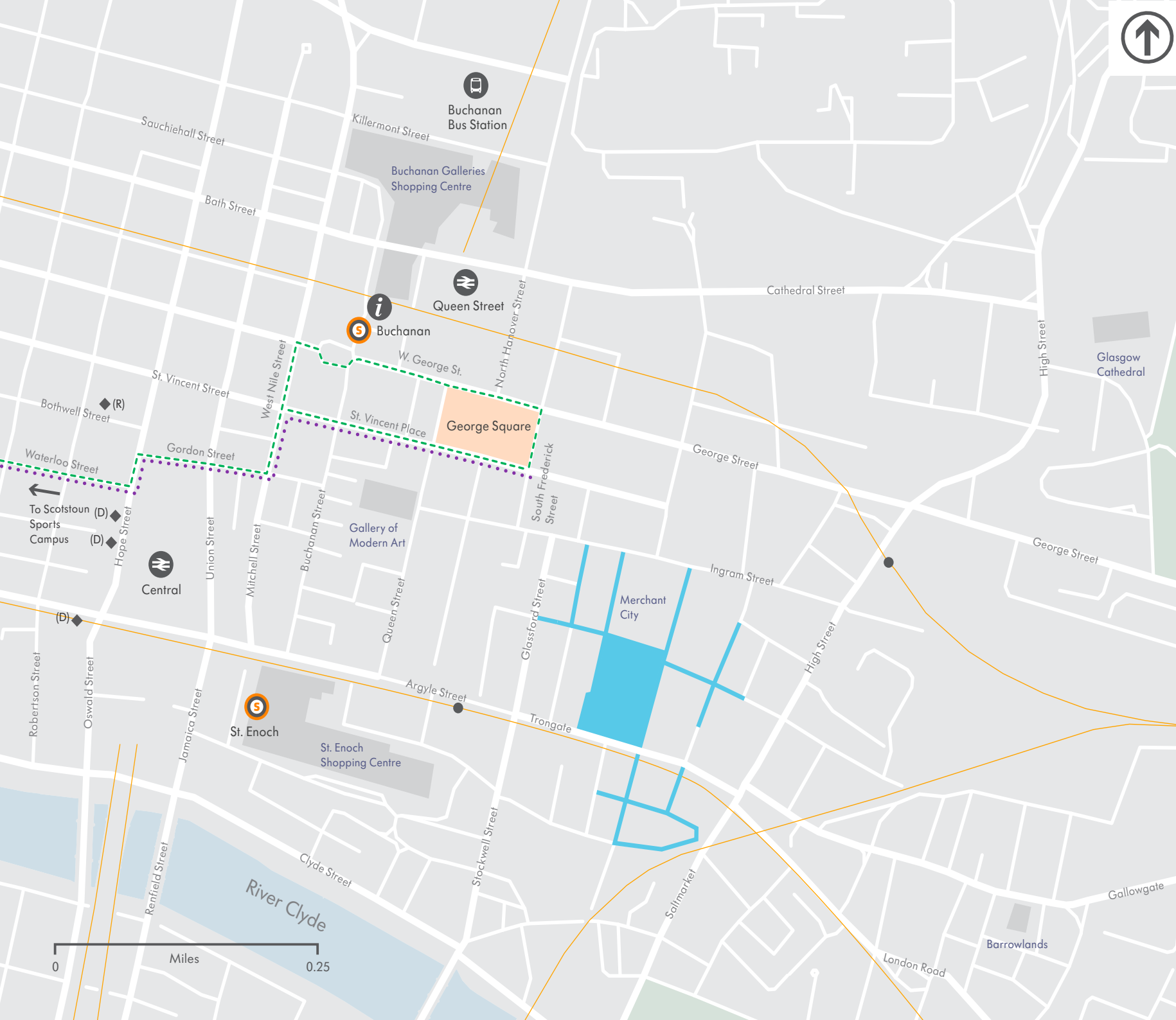
0 Miles 1

*Distances in miles are the appropriate shortest routes by road from George Square.



Your journey from central Glasgow

- Rail route
- Walking route
- Cycling route
- Landmark
- Festival hub
- Train station
- Public bus stop (depart)
- Public bus stop (return)
- Shuttle bus
- Subway station
- Tourist information



0 Miles 0.25

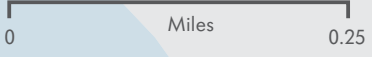
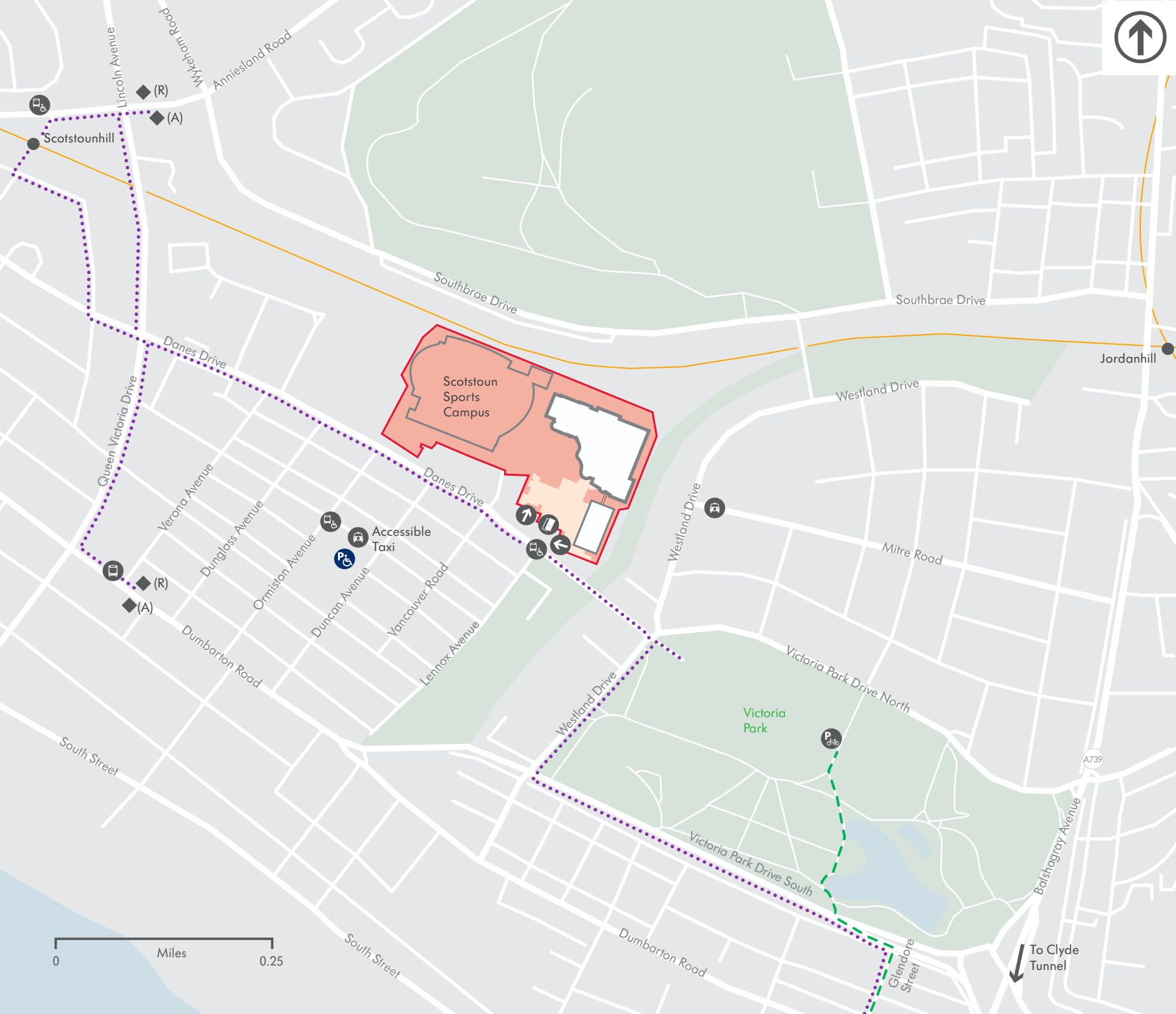
© Crown Copyright and database right 2014. All rights reserved.
 OS Licence No. 100023379. You are not permitted to copy, sub-license, distribute or sell any of this data to third parties in any form. Maps are indicative only and are subject to change.



Arriving at Scotstoun Sports Campus

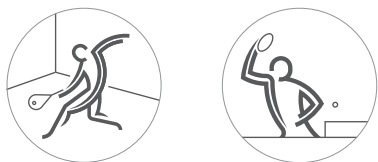
Key

- Rail route
- Walking route
- Cycling route
- Security perimeter
- Spectator area
- No spectator access
- Train station
- Public bus stop (arrive)
- Public bus stop (return)
- Shuttle bus
- Pre-booked accessible shuttle bus
- Pre-booked accessible parking
- Cycle parking
- Taxi drop-off
- Entrance/exit
- Ticket office



© Crown Copyright and database right 2014. All rights reserved.
 OS Licence No. 100023379. You are not permitted to copy, sub-license, distribute or sell any of this data to third parties in any form. Maps are indicative only and are subject to change.

Sport at Scotstoun Sports Campus



Can you tell a lob from a loop?
Find out more about Squash and Table Tennis at:

glasgow2014.com/sports

If you're inspired to have a go, there are hundreds of ways to unleash your sporty side after the Games. You can play, coach or volunteer – and a comprehensive list of opportunities across Scotland can be discovered here:

sportscotland.org.uk/unleash

For physical activity opportunities in Glasgow, including at Scotstoun Sports Campus, call Glasgow Sport on **0800 027 0470**.

Alternative formats of this document are available on request.
Email contactus@glasgow2014.com
or call 030 3333 2014.

If you wish to use a text relay service, see www.textrelay.org for assistance.

Near Scotstoun Sports Campus

- **Victoria Park**
The park was named to mark Queen Victoria's golden jubilee in 1887 and is considered by many to be Glasgow's prettiest green space. In keeping with its Victorian tradition this quiet refuge is planted with formal floral displays and is a lovely place for a picnic or a stroll.
- **West End / Byres Road including Ashton Lane, Cresswell Lane and Ruthven Lane**
This area is often referred to as bohemian, and on a visit to the West End you'll find yourself discovering quaint cafés, tea rooms, trendy bars, boutiques and vintage shopping, clubs, restaurants, cobbled lanes and art exhibitions.
- **The Titan Crane**
The Titan is a century old crane which has been transformed into a tourist attraction housing a collection of artefacts. Travel back in time to Clydebank's shipbuilding era and admire magnificent views across the Clyde from this 150ft high viewpoint.
- **Kelvingrove Art Gallery and Museum**
It's one of Europe's great art collections - all housed and displayed in 22 state-of-the-art galleries. They contain paintings and sculptures, silver and ceramics, European armour, weapons and firearms, clothing and furniture.
- **Botanic Gardens and Kibble Palace**
The Glasgow Botanic Gardens are located in the heart of the city's West End. The Gardens are home to the recently restored Kibble Palace, a magnificent glasshouse which houses the national collection of tree ferns, as well as a selection of plants from tropical rainforests.
- **Kelvingrove Bandstand**
The fully restored 1930s bandstand will become one of the free Festival 2014 destinations in the city during Games Time. Enjoy a packed daily programme of music, performance and family-friendly entertainment at this much loved venue.